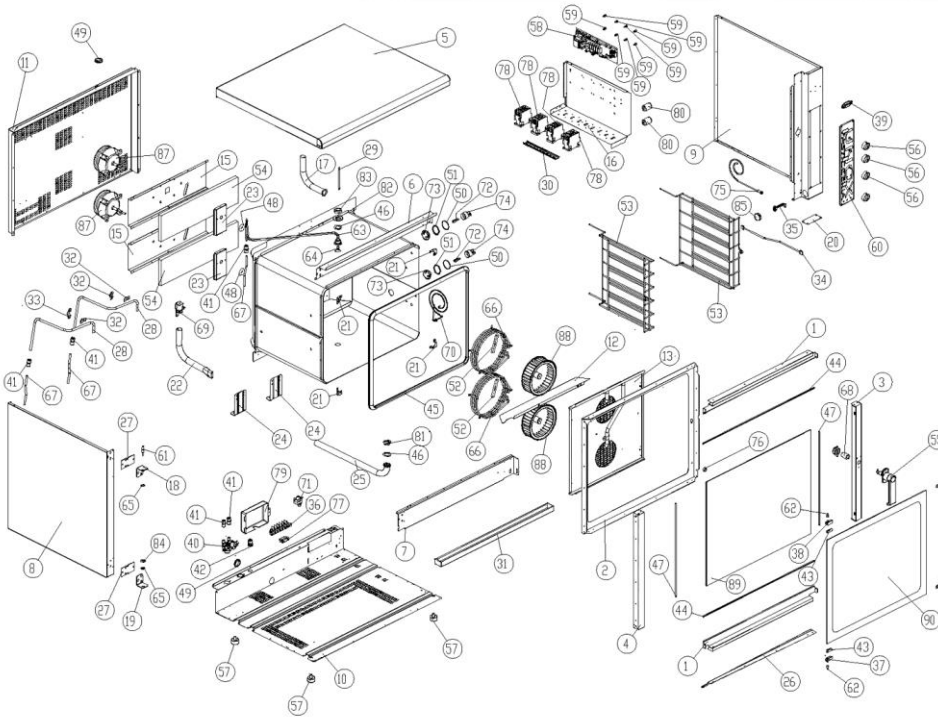


MOD: XB603

EXPLODED VIEW DISEGNO ESPLOSO



LEGEND - LEGENDA

| | | | |
|----|----------|----|----------|
| 1 | OB1010A1 | 54 | MN121A |
| 2 | OB1015A2 | 57 | PD061A |
| 3 | OB1020A1 | 58 | PE1010B1 |
| 4 | OB1025A0 | 59 | PE102 |
| 5 | OD1000B0 | 60 | PE1055B0 |
| 6 | OD1005A2 | 61 | RC1035A0 |
| 7 | OD1011A1 | 62 | RC1000B0 |
| 8 | OD1015B0 | 63 | RC1135A0 |
| 9 | OD1016B0 | 64 | RC1145A0 |
| 10 | OD1000C1 | 65 | RC-40 |
| 11 | OD1005C0 | 66 | RS1040A0 |
| 12 | OG1005B1 | 67 | TR255B |
| 13 | OG1010A5 | 68 | TR1005A0 |
| 14 | 2H032 | 69 | VE1135A0 |
| 15 | OH1000A2 | 70 | TR1005A2 |
| 16 | OH1005A0 | 71 | TR255B |
| 17 | OH1015A0 | 72 | VE1005A1 |
| 18 | OH1020A0 | 73 | VE1010A0 |
| 19 | OH1021A0 | 74 | VE1015A0 |
| 20 | OH1030A2 | 75 | VE1020A0 |
| 21 | OH1040A0 | 76 | VE1030A1 |
| 22 | OH1050A1 | 77 | VE1075A0 |
| 23 | OH1060A0 | 78 | VE1095A0 |
| 24 | OH1065A0 | 79 | VE1010A0 |
| 25 | OH1070A0 | 80 | VE121 |
| 26 | OH1005A1 | 81 | VI1005A0 |
| 27 | OH1140A2 | 82 | VI1235A0 |
| 28 | OH1500A0 | 83 | VI1245A0 |
| 29 | OH1650A0 | 84 | VI574 |
| 30 | OH1000B0 | 85 | VN1005A0 |
| 31 | OH1000A2 | 87 | VN1000B0 |
| 32 | 2H072 | 88 | VN1025A0 |
| 33 | 2H072 | 89 | VT1005A0 |
| 34 | CE1000C0 | 90 | VT1006A0 |
| 35 | CE1005B0 | | |
| 36 | CE1212 | | |
| 37 | CR045 | | |
| 38 | CR046 | | |
| 39 | ED1070A0 | | |
| 40 | EL1100A0 | | |
| 41 | EL1055A0 | | |
| 42 | EL1125A0 | | |
| 43 | GN006A | | |
| 44 | GN100 | | |
| 45 | GN1000B0 | | |
| 46 | GN1010A0 | | |
| 47 | GN102 | | |
| 48 | GN1140A0 | | |
| 49 | GN1045A0 | | |
| 50 | GN1055A0 | | |
| 51 | GN1065A0 | | |
| 52 | GN224 | | |
| 53 | GR1005A0 | | |
| 54 | LV1000A0 | | |
| 55 | MG1000A0 | | |

20/05/2005

serial number: 1250

1 / 2

MOD: XB603

EXPLODED VIEW DISEGNO ESPLOSO



DESCRIZIONE CODICI

| | | |
|----|----------|---|
| 1 | OB1010A1 | INGRESSO SUPPLIN PORTA INOX SERIE XB |
| 2 | OB1015A2 | PORTA INTERNA INOX XB603 |
| 3 | OB1020A1 | COLONNINA LAT. SX INOX XB603 |
| 4 | OB1025A0 | COLONNINA LAT. SX INOX XB603 |
| 5 | OD1000B0 | COPERCHIO INOX SERIE XB |
| 6 | OD1005A2 | PROFILO INOX FACCIATA MULTIFLUA XB603 |
| 7 | OD1011A1 | PROFILO INF. INOX FACCIATA MULTIFLUA XB603 |
| 8 | OD1015B0 | FRANCO SX INOX XB603 |
| 9 | OD1016B0 | FRANCO SX INOX XB603 |
| 10 | OD1000C1 | FONDO CERNIERO INOX XB603/GB603/0 |
| 11 | OD1005C0 | SCHEDE NON XB603 |
| 12 | OG1005B1 | DIS. CAPER AREA INOX STANDARD SERIE XB |
| 13 | OG1010A5 | CARRIER AREA INOX XB603 |
| 14 | 2H032 | LAMIERA TERMAL PORTA FREDDA LAMINATO |
| 15 | OH1000A2 | PROFILO SCORRIANO MOTOR SERIE XB-XG |
| 16 | OH1005A0 | LAMIERA PORTACAPAPARTE |
| 17 | OH1015A0 | CAMMINO RULLI INOX STANDARD |
| 18 | OH1020A0 | STAFIA SUP. SUPPORTO PORTA |
| 19 | OH1021A0 | STAFIA INFERIORE SUP. PORTA |
| 20 | OH1030A2 | BIMPO INF. CHIAVUSA CUSCINETTI |
| 21 | OH1040A0 | ANVILLO INOX FACCIATA MULTIFLUA STAND |
| 22 | OH1050A1 | RULLO VENTURI STANDARD |
| 23 | OH1060A0 | NUOVO SUPPORTO PRIMEROPPIA ZINGARO |
| 24 | OH1065A0 | NUOVO SCORRIANO MULTIFLUA STANDARD |
| 25 | OH1070A0 | RULLO SCARICO INOX 48x3 |
| 26 | OH1005A1 | PROF. SCARICO INOX SERIE XB |
| 27 | OH1040A2 | CONTROSTAFIA PORTA XB-XG-XY |
| 28 | OH1500A0 | RULLO EST. LAMIERA INOX FESAGGIO PORTA GRANITE |
| 29 | OH1650A0 | RULLO COPRI RULLO TERNOSIARDI DI SC |
| 30 | OH1000B0 | SAROLA INF. OMEGA PORTA |
| 31 | OH1000A2 | CASSETTO RACCOLTA GOCCIE |
| 32 | 2H072 | PROFILO TERMA PORTA LAMINATA LAMINATO |
| 33 | 2H072 | OMEGA DOPPIO FERMALIBRO LUM. XN401/501/XG401 |
| 34 | CE1000C0 | CAVO COIL. SCHEDE PAF. CONTROL. 4 FILI VERDI. 2000 UL. CSA CON |
| 35 | CE1005B0 | CAVO COILSOL. SCHEDE. CONTROL. 2000 UL. CSA CON |
| 36 | CE1212 | MOSESTI. SPC/709. QV/100.00593 |
| 37 | CR045 | CERN. SX INOX XV. XL. XB |
| 38 | CR046 | CERN. SX INOX XV. XL. XB |
| 39 | ED1070A0 | EPICHERIA UNOR. LUMINE. 7x13.5. ARRETRATO CON BORDO EST. |
| 40 | EL1100A0 | LITTE. DOPPIA. RETE. L. QUOTE. INCORPORATO. CON VED. ROSSO. TA. |
| 41 | EL1055A0 | REDUZIONI J. S. DA 40 A 4. DA 8. PREDRIBORRE |
| 42 | EL1125A0 | PASSAPARTE. 08 |
| 43 | GN006A | GUARNI PORTA FREDDA A BANDA. PTFE CAR/CARS 50x1mm |
| 44 | GN100 | PROFILO PORTA INOX P94. XE |
| 45 | GN1000B0 | GUARNIZIONE NERA. SO. SHORT. CORN. XB-XG-XY |
| 46 | GN1010A0 | GUARN. PTFE-CARS. NUOVO. SCARICO. #5208.5x2 |
| 47 | GN102 | PROFILO PORTA INOX C121. XI |
| 48 | GN1140A0 | GUARNIZIONE PORTAMOTORI. STAMP. ALBERO. INOX. D10. XB. X. |
| 49 | GN1045A0 | GUARNI. ANTERIORE. CARRIERO. SCARICO. #1402.9. 9.5x7.5 |
| 50 | GN1055A0 | OR. 44x2. VINO. 20. ROSSO. |
| 51 | GN1065A0 | GUARN. FERRITE. VEROSI. #3544. #44. PORTALAMP. |
| 52 | GN224 | GUARNI. PTFE-CARS. 100x220. 8x4. #1999 |
| 53 | GR1005A0 | GRIGLIA. LAT. INOX. PASTICCERIA. 675 |
| 54 | LV1000A0 | LUNA. VETRO. COI. SULLI. 60x70. VETRO. PORTAMOTORI. |
| 55 | MG1000A0 | NUOVA. MANIGLIA. STANDARD. |
| 56 | MN121A | MANIGLIA. CON. INOX. NON. SERRAMENTI. 104 |
| 57 | PD061A | REGNO. INOX. DW40. INOX. NERO. DRINCO. |
| 58 | PE1010B1 | SCHEDE. DI. POTENZA. LINEA. PROFESSIONAL. VER. 2003. NET |
| 59 | PE102 | SUPPORTO. PER. SCHEDE. 2.40.10.08 |
| 60 | PE1055B0 | CONTROLLO. VERBALE. COMPLETO. DI. PASTICCERIA. VER. 2003 |
| 61 | RC1035A0 | FRANCO. RETRATTO. SUP. PORTA. XB-XG-XY |
| 62 | RC1000B0 | BOTTIGLIA. INOX. SUPP. VETRO. STANDARD |
| 63 | RC1135A0 | RACC. PORTA. GRANITE. CON. RULLO. OH1750A0. SALDATO |
| 64 | RC1145A0 | VITE. CHIAVURA. FORO. PORTA. GRANITE. |
| 65 | RC-40 | BOTTIGLIA. BRONZO. STAFIA. SUPP. PORTA. XV501 |
| 66 | RS1040A0 | RES. CIRCUI. 200V. 1500W. 220V. DW20. 27. 1X/020Y |
| 67 | TR255B | TERMOISOL. SIC. ALUMIN. 3.30°C. 1/8"X1.14"X120mm |
| 68 | TR1005A0 | RULLO. SI. NERO. 27x17. 55x45. 06 |
| 69 | VE1135A0 | ATTUATORE. VENTURI. 220V. 50/60. HZ. SERIE. 2 |
| 70 | TR1005A2 | SONDA. DI. TEMP. CON. PASTIGLIA. PORTA. SALD. ALBERO. |
| 71 | TR255B | TERMOISOL. SIC. ALUMIN. 3.30°C. 1/8"X1.14"X120mm |
| 72 | VE1005A1 | LAMPADA. ALCOLONA. 40W |
| 73 | VE1010A0 | VETRO. PORTALAMPADA. VAPORE. 2002 |
| 74 | VE1015A0 | PORTA. LAMPADA. PER. LAMPADA. ALCOLONA |
| 75 | VE1020A0 | INCORNER. PER. PORTA. LAMPADA. ALCOLONA |
| 76 | VE1030A1 | CHIAVINA. DW2. 2mm. PER. INCORNER. |
| 77 | VE1075A0 | PRESCARICO. TV. 258. 80 |
| 78 | VE1095A0 | TELETRUOTE. DE. 25A. 230V. 50/60. HZ. CUSCINETTI. |
| 79 | VE1100A0 | SCAROLA. COPRI. MOTORISTERA. SERIE. PLUS |
| 80 | VE121 | CONDENS. CAR. PTFE. 5x8. NEW. FABRION |
| 81 | VI1005A0 | BIMPO. PRESSATO. PER. NUOVO. SCARICO |
| 82 | VI1235A0 | ROTONDELLA. PIANA. 50x28.4. INOX |
| 83 | VI1245A0 | SDADO. 3/16". 1/4". INOX. FESAGGIO. PORTA. GRANITE |
| 84 | VI574 | ROTONDELLA. 64x24. INOX |
| 85 | VN1005A0 | COMPRESA. PORTAMOTORI. NERO. 40x4 |
| 87 | VN1000B0 | MOTOR. CONDO. 5.6. 200W. ALB. M.C. CONN. 5. POU |
| 88 | VN1025A0 | VENTOLE. 078. 8H. 38. FINE. DADO. 88 |
| 89 | VT1005A0 | VETRO. EST. 75x46. 24x4. RL. XB603-G |
| 90 | VT1006A0 | VETRO. EST. 58. 70x42. 24x4. BTRL. XB603 |

DESCRIPTION

| | | |
|----|----------|---|
| 1 | OB1010A1 | ENG-INGRESSO SUPPLIN PORTA INOX SERIE XB |
| 2 | OB1015A2 | ENG-PORTA INTERNA INOX XB603 |
| 3 | OB1020A1 | ENG-COLONNINA LAT. SX INOX XB603 |
| 4 | OB1025A0 | ENG-COLONNINA LAT. SX INOX XB603 |
| 5 | OD1000B0 | ENG-COPERCHIO INOX SERIE XB |
| 6 | OD1005A2 | ENG-PROFILO INF. INOX FACCIATA MULTIFLUA XB603 |
| 7 | OD1011A1 | ENG-PROFILO INF. INOX FACCIATA MULTIFLUA XB603 |
| 8 | OD1015B0 | ENG-FRANCO SX INOX XB603 |
| 9 | OD1016B0 | ENG-FRANCO SX INOX XB603 |
| 10 | OD1000C1 | ENG-FONDO CERNIERO INOX XB603/GB603/0 |
| 11 | OD1005C0 | ENG-SCHEDE NON XB603 |
| 12 | OG1005B1 | ENG-DIS. CAPER AREA INOX STANDARD SERIE XB |
| 13 | OG1010A5 | ENG-CARRIER AREA INOX XB603 |
| 14 | 2H032 | ENG-WASHED METAL HOLDER FOR COOL DOOR |
| 15 | OH1000A2 | ENG-PROFILO SCORRIANO MOTOR SERIE XB-XG |
| 16 | OH1005A0 | ENG-COMPONENT STAINLESS STEEL HOLDER |
| 17 | OH1015A0 | ENG-STANDARD STAINLESS STEEL ROLLER CH-WHNEY |
| 18 | OH1020A0 | ENG-UPPER BRACKET TO HOLD THE DOOR |
| 19 | OH1021A0 | ENG-LOWER BRACKET TO HOLD THE DOOR |
| 20 | OH1030A2 | ENG-BOTTOM LG. TO COASE CONTROL PANEL |
| 21 | OH1040A0 | ENG-STAINLESS STEEL STANDARD CORNER OF RIGHT PART OF CAVITY |
| 22 | OH1050A1 | ENG-STANDARD VENTURE TUBE |
| 23 | OH1060A0 | ENG-NEW ZINCED SUPPORT TO PUSH MOTORS |
| 24 | OH1065A0 | ENG-NEW STANDARD CAVITY SUPPORT |
| 25 | OH1070A0 | ENG-RULLO SCARICO INOX #48x3 |
| 26 | OH1005A1 | ENG-PROF. SCARICO INOX SERIE XB |
| 27 | OH140A2 | ENG-DOOR COUNTERBRILL XB-XG-XY |
| 28 | OH1500A0 | ENG-EXTERNAL HUMIDITY FUSE NEW LINE STAND |
| 29 | OH1650A0 | ENG-RULLO COPRI RULLO TERNOSIARDI DI SC |
| 30 | OH1000B0 | ENG-SAROLA COPRI. MOTORISTERA. SERIE. PLUS |
| 31 | OH1000A2 | ENG-DROP BRAY |
| 32 | 2H072 | ENG-WASHED PROFILE TO HOLD HUMIDITY FUSE |
| 33 | 2H072 | ENG-OMEGA DOPPIO FERMALIBRO LUM. XN401/501/XG401 |
| 34 | CE1000C0 | ENG-CONNECTION CABLE POWER - CONTROL. CAPD 4 WIRES VERS. 20 |
| 35 | CE1005B0 | ENG-CONNECTION CABLE CONTROL-COMMUNIT. DIFF. 8 232 VERS. 20 |
| 36 | CE1212 | ENG-TERMINAL BOARD |
| 37 | CR045 | ENG-RIGHT STAINLESS STEEL HINGE XV. XL. XB |
| 38 | CR046 | ENG-LEFT STAINLESS STEEL HINGE XV. XL. XB |
| 39 | ED1070A0 | ENG-LINCA EPIPLICA. SPICHER. 78x33.5. VETRO. WITH. EXTERNAL. FRAME. |
| 40 | EL1100A0 | ENG-WATER DOUBLE EXTERNSIVE. #1. 1/8". COIN. INCL. W/ RED. COIL. |
| 41 | EL1055A0 | ENG-J.S. REDUCTION. FROM. DW40. TO. 4x8. PREDRIBORRE. |
| 42 | EL1125A0 | ENG-WALL. PASSING. 08. 08 |
| 43 | GN006A | ENG-COOL DOOR SEAL. PTFE. CAR/CARS. Thickness. 1mm |
| 44 | GN100 | ENG-DOOR. BLACK. SEAL. P94. XE |
| 45 | GN1000B0 | ENG-BLACK. COOK. CAR. 50. SHORT. CORN. XB. XG. XY |
| 46 | GN1010A0 | ENG-SEAL. PTFE-CARS. NEW. DRRAIN. #5208.5x2 |
| 47 | GN102 | ENG-BLACK. SILICON. DOOR. PROFILE. C121. XI |
| 48 | GN1140A0 | ENG-MOTOR. GASKET |
| 49 | GN1045A0 | ENG-ANTIVELO. SEAL. FOR. DUALICE. CH-WHNEY. #1402.9. 9.5x7.5 |
| 50 | GN1055A0 | ENG-OR. 44x2. VINO. 20. RED. |
| 51 | GN1065A0 | ENG-SEAL. FOR. LAMP. GLASS. COVER. FERRI. VIRGIN. PTFE. #3544. #44 |
| 52 | GN224 | ENG-PTFE-CARS. 100x220. 8x4. #1999. GASKET |
| 53 | GR1005A0 | ENG-STAINLESS. STEEL. LATERAL. SUPPORT. # 675 |
| 54 | LV1000A0 | ENG-LUNA. VETRO. COI. SULLI. 60x70. VETRO. PORTAMOTORI. |
| 55 | MG1000A0 | ENG-NEW. STANDARD. HANDLE. |

20/05/2005

serial number: 1250

2 / 2